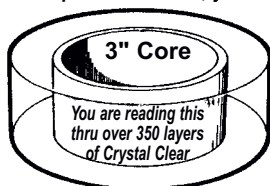


INVISIBLE CLEAR TAPE / Crystal Clear

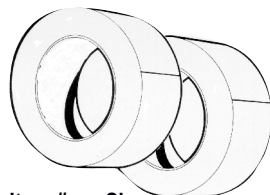
Comparable to J-Lar, yet 38 more yards per roll at a fraction of the cost.



Clear is much better than masking tape for inlaid mats. It's also ideal tape for mending all kinds of paper items - book pages, art prints, maps, etc. Use for matting work and general purpose business office applications. Does not yellow, discolor or dry out.

Item #	Size	Price Each	6 +	12+
336 <input checked="" type="checkbox"/>	3/4" x 110 yds.			
337 <input checked="" type="checkbox"/>	1" x 110 yds.			
338 <input checked="" type="checkbox"/>	2" x 110 yds.			

DECOR BOX SEALING / PACKING TAPE



High Performance - Clear
First Quality - 2" and 3" wide. Made for sealing and packing cartons and boxes. Meets U.S. Postal requirements. 3" Core. #360 and #361 use dispenser #639 (below). #355 uses dispenser #644 (below).

Item #	Size	Price Each	12 +	36 +
360 <input checked="" type="checkbox"/>	2" x 55 yards			
361 <input checked="" type="checkbox"/>	2" x 110 yards			
355 <input checked="" type="checkbox"/>	3" x 110 yards			

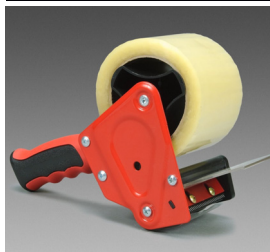
3M BOX SEALING / PACKING TAPE



An industrial packaging tape used for box sealing and other packaging applications. Meets US Postal Regulations. Clear. 1.9 mm. 3" Core. **3M #371**

Item #	Size	Price Each	12 +	36 +
590 <input checked="" type="checkbox"/>	2" x 60 yards			
591 <input checked="" type="checkbox"/>	2" x 110 yards			

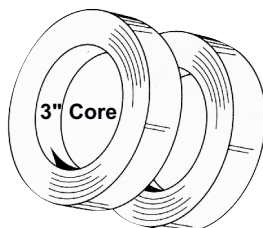
BOX SEALING / PACKING TAPE DISPENSERS



Dispensers have semi-automatic shut-off that will allow you to seal cartons and boxes with a minimum amount of effort. ONE HAND operation will attach a strip of PVC tape. You determine cut-off point with a flick of the wrist. Built-in cutoff bar cuts tape quickly and cleanly. Both units hold up to 110 yard rolls.

Item #	Description	Price Each
639 <input checked="" type="checkbox"/>	Holds up to 2" wide x 110 yds on 3" core	
644 <input checked="" type="checkbox"/>	Holds 3" wide x 110 yds on 3" core	

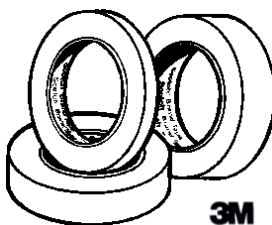
3/4" FILAMENT (STRAPPING) TAPE



Glass-reinforced acetate backed tape. For use in strapping packages, bundles, mouldings, etc. **VERY STRONG.** Will not cut by hand! Meets U.S. Postal Regulations.

Item #	Size	Price Each	12+
362 <input checked="" type="checkbox"/>	3/4" x 60 yds.		

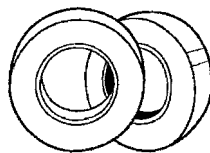
SCOTCH™ WHITE PAPER TAPE



This printable paper tape is coated with a medium tack adhesive that allows for clean removal from most surfaces, even after prolonged periods of application. Uses include hinging and flapping artwork. Crepe texture, soft white, gloss finish.

Item #	Size	Price Each
575 <input checked="" type="checkbox"/>	3/4" x 60 yd.roll	
576 <input checked="" type="checkbox"/>	1" x 60 yd. roll	

DECOR WRITABLE WHITE ARTIST TAPE



Premium flatback matte white paper tape used for labeling. Prints with pens, markers, pencils and flexo inks. Protects the edges of deep bevels on foamboards and mats. Removes cleanly and safely from boards. No stain or residue after removal. Easily repositions. **pH neutral.**

Item #	Size	Price Each	12 +
393 <input checked="" type="checkbox"/>	1/2" x 60 yd. roll		
394 <input checked="" type="checkbox"/>	3/4" x 60 yd. roll		
380 <input checked="" type="checkbox"/>	1" x 60 yd. roll		

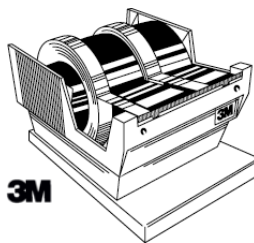
PRESSURE SENSITIVE KRAFT PAPER TAPE



This tape, made of kraft paper is perfect for sealing the back of pictures. Easy to use, premium quality.

Item #	Size	Price Each	24 +
374 <input checked="" type="checkbox"/>	1 1/2"x60yds		
375 <input checked="" type="checkbox"/>	2"x60yds		
376 <input checked="" type="checkbox"/>	3"x60yds		

SCOTCH™ MAINLINE TAPE DISPENSER

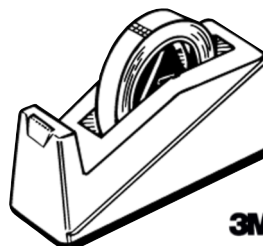


A versatile way to dispense several rolls of tape in one place. Weighted dispenser holds one or more rolls of tape in a variety of widths up to a total of 6 rolls on 3" cores. **3M #P56W**

Item #	Price Each
592	

HIGHLAND™ TABLETOP WEIGHTED TAPE DISPENSER

Economical, weighted plastic shell tape dispenser for heavy duty use. Unique dual mandrel accepts tape up to 1" wide on a 1" or 3" diameter core. **3M #HB-900**



Item #	Price Each
593	