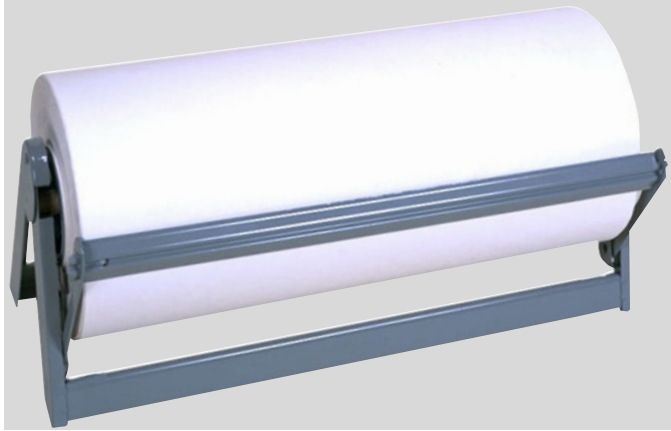


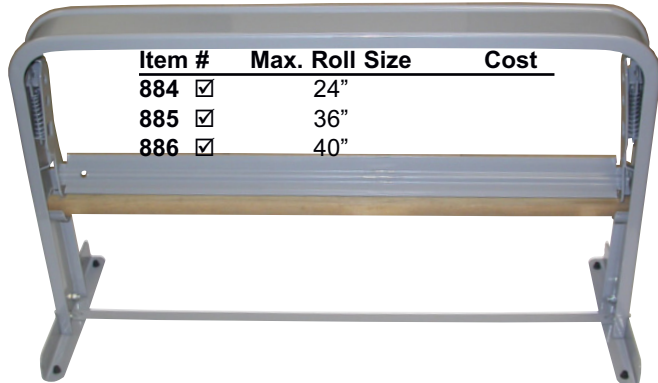
ALL-IN-ONE PAPER CUTTERS



- Can be used as a kraft paper and plastic bag dispenser
- For 9" diameter or smaller rolls on 3" core.
- All steel construction with double edge tempered steel cutting blade.
- No assembly necessary. Spread the base and it's ready-for-use.
- Stands on a table, brackets to a wall and hangs from an overhang for easy operation.

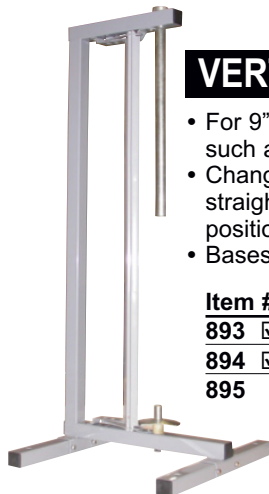
Item #	Max. Roll Size	Cost	Item #	Max. Roll Size	Cost
887 <input checked="" type="checkbox"/>	18"	\$16.35	890 <input checked="" type="checkbox"/>	36"	
888 <input checked="" type="checkbox"/>	24"	\$17.35	891 <input checked="" type="checkbox"/>	40"	
889 <input checked="" type="checkbox"/>	30"	\$21.45	892	48"	

COUNTER MOUNT PAPER CUTTERS



Item #	Max. Roll Size	Cost
884 <input checked="" type="checkbox"/>	24"	
885 <input checked="" type="checkbox"/>	36"	
886 <input checked="" type="checkbox"/>	40"	

- For 9" diameter or smaller rolls on 3" core.
- Two point knife bearing for sharp straight cuts, better than regular paper cutter.
- Automatic knife locking device for easy paper loading.
- Oil tempered springs for longer life.



VERTICAL PAPER CUTTERS

- For 9" diameter or smaller rolls on 3" core, such as kraft paper or Drymount tissue.
- Changing rolls is made easy by pulling the straight edge blade to an open locked position.
- Bases are designed to allow wheel posts.

Item #	Used for	Cost
893 <input checked="" type="checkbox"/>	18"-27" rolls	
894 <input checked="" type="checkbox"/>	30"-36" rolls	
895	40"-48" rolls	

KRAFT PAPER

A low cost, all purpose paper to cover the back of the frame to prevent damage. 40 lb. & 50 lb. natural kraft paper available in the following widths: 18", 24", 30", 36", 40", and 48".



Mix 'N Match for Quantity Pricing.

Call for larger quantity discounts.

Item #	Paper Width	Basis Weight	Cost per roll	3+/ Save xx%	6+/ Save xx%
--------	-------------	--------------	---------------	---------------------	---------------------

VIRGIN NATURAL KRAFT PAPER

18-40	18"	40 lbs.			
24-40	24"	40 lbs.			
30-40	30"	40 lbs.			
36-40	36"	40 lbs.			
36-50	36"	50 lbs.			
40-50	40"	50 lbs.			
48-50	48"	50 lbs.			

BLACK KRAFT PAPER

1905	24"	50 lbs.			
1907	36"	50 lbs.			
1908	48"	50 lbs.			

RECYCLED KRAFT PAPER

24-50R	24"	50 lbs.			
36-50R	36"	50 lbs.			

BLACK LATEX KRAFT PAPER [only from GA]

provides moisture barrier, strength and durability for conservation framing

1909	36"	50 lbs.			
------	-----	---------	--	--	--

75 and 100 Gauge CENTERFOLD SHRINK FILMS - 250 feet



75 Gauge Shrink film			100 Gauge Shrink film		
Item #	Roll Size	1 for	Item #	Roll Size	1 for
321	24"		1341	24"	
322	30"		1342	30"	
323	36"		1343	36"	

SHRINK SEALER / WRAP MACHINES



Item #	Desc.	1 for
1338	No timer	
1339	Timer	

Requires no assembly. Just plug it in and you're ready to wrap. Lightweight, sleek and is built to last. Both units come complete with the ultra-light HotShot® adjustable temperature heat gun. 2-year limited warranty. 40" cap'y.

DUAL TEMPERATURE HEAT GUN



Very light and easy-to-use. 2 temperature selections: 750°F and 1000°F. Perfect for shrinkwrapping applications.

Item #	1 for
1331	