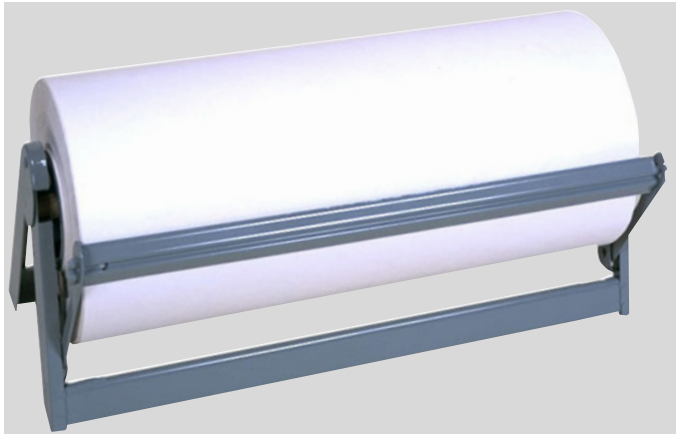


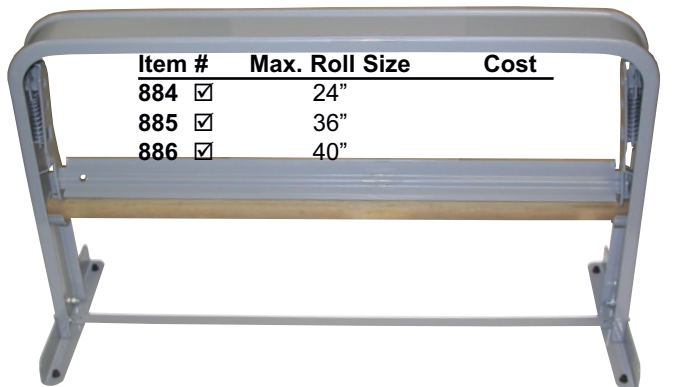
ALL-IN-ONE PAPER CUTTERS



- Can be used as a kraft paper and plastic bag dispenser
- For 9" diameter or smaller rolls on 3" core.
- All steel construction with double edge tempered steel cutting blade.
- No assembly necessary.
Spread the base and it's ready-for-use.
- Stands on a table, brackets to a wall and hangs from an overhang for easy operation.

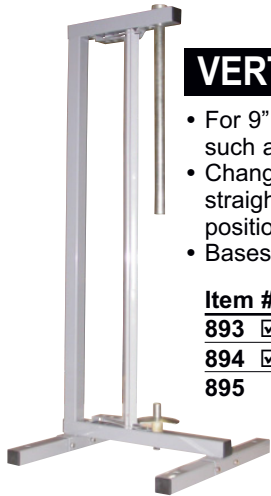
Item #	Max. Roll Size	Cost	Item #	Max. Roll Size	Cost
887 <input checked="" type="checkbox"/>	18"		890 <input checked="" type="checkbox"/>	36"	
888 <input checked="" type="checkbox"/>	24"		891 <input checked="" type="checkbox"/>	40"	
889 <input checked="" type="checkbox"/>	30"		892	48"	

COUNTER MOUNT PAPER CUTTERS



Item #	Max. Roll Size	Cost
884 <input checked="" type="checkbox"/>	24"	
885 <input checked="" type="checkbox"/>	36"	
886 <input checked="" type="checkbox"/>	40"	

- For 9" diameter or smaller rolls on 3" core.
- Two point knife bearing for sharp straight cuts, better than regular paper cutter.
- Automatic knife locking device for easy paper loading.
- Oil tempered springs for longer life.



VERTICAL PAPER CUTTERS

- For 9" diameter or smaller rolls on 3" core, such as kraft paper or Drymount tissue.
- Changing rolls is made easy by pulling the straight edge blade to an open locked position.
- Bases are designed to allow wheel posts.

Item #	Used for	Cost
893 <input checked="" type="checkbox"/>	18"-27" rolls	
894 <input checked="" type="checkbox"/>	30"-36" rolls	
895	40"-48" rolls	

KRAFT PAPER

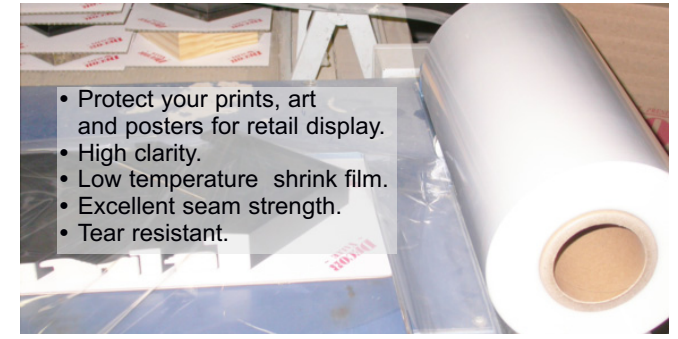
A low cost, all purpose paper to cover the back of the frame to prevent damage. 40 lb. & 50 lb. natural kraft paper available in the following widths: 18", 24", 30", 36", 40", and 48".



Mix 'N Match for Quantity Pricing.
Call for larger quantity discounts.

Item #	Paper Width	Basis Weight	Cost per roll	3+	6+
VIRGIN NATURAL KRAFT PAPER					
18-40	18"	40 lbs.			
24-40	24"	40 lbs.			
30-40	30"	40 lbs.			
36-40	36"	40 lbs.			
36-50	36"	50 lbs.			
40-50	40"	50 lbs.			
48-50	48"	50 lbs.			
BLACK KRAFT PAPER					
1905	24"	50 lbs.			
1907	36"	50 lbs.			
1908	48"	50 lbs.			
RECYCLED KRAFT PAPER					
24-50R	24"	50 lbs.			
36-50R	36"	50 lbs.			
BLACK LATEX KRAFT PAPER [only from GA]					
provides moisture barrier, strength and durability for conservation framing					
1909	36"	50 lbs.			

75 and 100 Gauge CENTERFOLD SHRINK FILMS - 250 feet



75 Gauge Shrink film			100 Gauge Shrink film		
Item #	Roll Size	1 for	Item #	Roll Size	1 for
321	24"		1341	24"	
322	30"		1342	30"	
323	36"		1343	36"	

SHRINK SEALER / WRAP MACHINES



Requires no assembly. Just plug it in and you're ready to wrap. Lightweight, sleek and is built to last. Both units come complete with the ultra-light HotShot® adjustable temperature heat gun. 2-year limited warranty. 40" cap'y.

Item #	Desc.	1 for
1338	No timer	
1339	Timer	

DUAL TEMPERATURE HEAT GUN



Very light and easy-to-use. 2 temperature selections: 750°F and 1000°F. Perfect for shrinkwrapping applications.

Item #	1 for
1331	