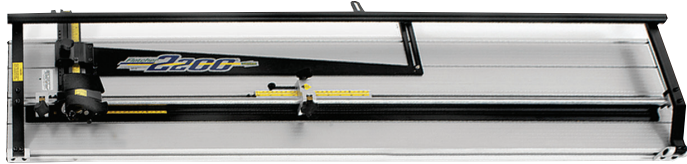


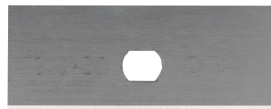
## FLETCHER 2200 Matboard / Foamboard Cutters

These manual Fletcher cutter systems create bevels and produced V-Grooves with ease in 4-ply matboards and cut straight lines up to 1/2".



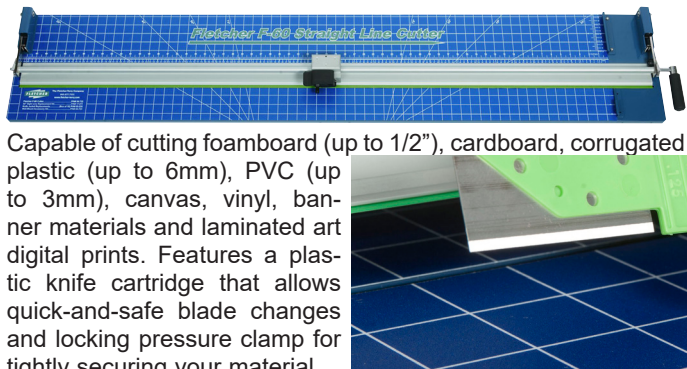
**Includes:**

- 1 2200 Mat Cutter
- 1 Sight Guide Gage
- 2 Squaring Blocks
- 10 Blades #F05012
- 10 Blades #F05004



Item #	Description	Price
F04681	F2200 48" Mat Cut System	
F04682	F2200 60" Mat Cut System	
F04622	F2200 Measuring Stops	
F04630	F2200 Right Squaring Extension	
F04631	F2200 Mat Clamp Lifters - set of 2	
F05004	Fletcher brand Utility/Rail Cutting Blades .017 100/box	
F05012	Fletcher brand Mat Blades .012 100/box	
F05015	Fletcher brand Mat Blades .015 100/box	
F05016	Fletcher brand Mat Blades Single Edge .015 100/bx	
F12045	Fletcher F2200 Repair Kit: springs, bushings, bearings, strap	

## F-60 Semi-Rigid / Flexible Cutter 60"



Capable of cutting foamboard (up to 1/2"), cardboard, corrugated plastic (up to 6mm), PVC (up to 3mm), canvas, vinyl, banner materials and laminated art digital prints. Features a plastic knife cartridge that allows quick-and-safe blade changes and locking pressure clamp for tightly securing your material.

#F05235

Item #	Description	Price
F04722	F-60 Substrate Cutter 60"	
F05235	F-60 Replacement Blades 10/box	

## FLETCHER FSC Substrate Cutter



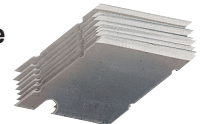
**Substrate Cutting Capability**

- Aluminum Sheets up to .063"
- Aluminum Composites up to 4mm
- Corrugated Plastics up to 1/2" (13mm)
- Glass/Mirrors up to 1/4" (6mm)
- PVC & Foamboard up to 1/2" (13mm)
- Acrylics/Plexiglass up to 1/4" (6mm)
- MDF up to 3/32" (2.4mm)

**Includes:**

- 1 FSC Unit (wall or free-standing)
- 1 1/2" Blade Holder
- 1 ACM Cutting Wheel Holder
- 1 Acrylic Blade Holder
- 1 Tube of 10 FSC Blades #F05222
- 1 Tube of 10 Acrylic Scoring Blades
- 1 Set of Aluminum Composite Wheels
- 1 Tool Caddy
- 2 Material Production Stops
- 1 Sight Laser Line
- 1 Manual

**Interchangeable  
Cutting Head  
Technology**



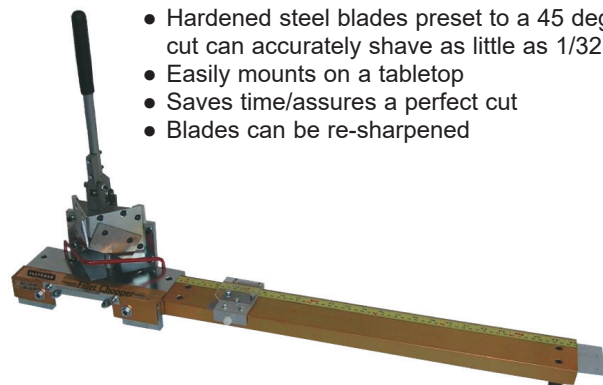
#F05222

Cuts clean, debris-free, no secondary processing. Can be placed in same room as printer, saving valuable shop floor space. Includes Laser Sight Line Cutting Guide that is adjustable for knife or wheel cutting operation and projects a cut line on the substrate, eliminating guess work and costly errors in a pre-print or post printing process. Mounts on wall or free-standing. Substantial cast aluminum cutting head, ergonomic "T" handle bar, power-lock rod and innovative glide bearing system. V-Groove Cutting. Fine adjustment increments for precise depth control. Has the ability of cutting aluminum sheets up to .063" in a single pass.

Item #	Description	NOW
F04720	FSC Multi-Material Cutter	
F02120	Steel Glass Wheel 120° 10/tube	
F05222	FSC Blades 10/tube	
F05712	Acrylic Scoring Blades 10/tube	

## FLETCHER Fillet Chopper

- Hardened steel blades preset to a 45 degree cut can accurately shave as little as 1/32 inch
- Easily mounts on a tabletop
- Saves time/assures a perfect cut
- Blades can be re-sharpened



Item #	Description	Price
F04900	Fillet Chopper	
F05700	Fillet Chopper-replacement blades: set of 2	